



DR150cc Owner's Manual

Rev 2006-2

A: INTRODUCTION

Thank you for purchasing a CMSI Manufactured TN’G motor scooter. CMSI has invested over 10 years in establishing the facilities, technical infrastructure and nationwide sales and service network that exists today as TN’G Scooters, a trademark of CMSI. TN’G Scooters is growing rapidly due to its reputation in quality research, styling & design, production and service.

We recommend genuine TN’G products for replacement parts and accessories as they have been specifically designed for your scooter and manufactured to meet CMSI demanding standards. With the intention of achieving our goal to provide complete customer support, detailed parts catalogs are available for you to view at our web site, www.tngscooters.com. We continuously keep a large inventory of parts and accessories in stock to support our TN’G dealers, service centers and ultimately, TN’G scooter owners. Your local TN’G dealer knows your scooter the best and always is interested in your satisfaction! We advise your local TNG dealer make all repairs on your scooter. You can find a complete list of dealers and service centers on our website.

This Owner's Manual contains important information on safety, operation, and maintenance. Anyone who operates a TN'G Scooter should carefully read and understand the contents of this manual before use.

TN'G Scooters are street legal vehicles in all 50 states. You need to check with your state requirements on license and registration to ride this scooter legally on public roads.

SPECIAL SYMBOLS

Significant safety messages are provided both in this manual and on the scooter. For your safety and the safety of others please pay special attention to all warnings preceded by !.

! WARNING - Indicates risk of severe injury or DEATH may result to the scooter operator, a bystander or a person inspecting or repairing the scooter if failure to follow these instructions.

CAUTION - Indicates that special precaution must be taken to avoid damage to the scooter.

NOTE - A NOTE provides key information to make procedures easier to spot.

This Owner Manual should be considered as a permanent part of the scooter as it contains important information for operation and maintenance of the scooter. It should remain with the scooter at all times.

This Owner Manual contains the most current product information at the time of approval for printing. TN’G Scooters reserves the right to make changes at any time without notice and without incurring any obligation. If you have any questions about the manual, please consult your TN’G dealers, or our web site www.tngscooters.com. The most recent documentation will always be available on our web site.

B: TABLE OF CONTENTS

A:	INTRODUCTION.....	Page 2
B:	TABLE OF CONTENTS.....	Page 5
C:	SAFETY INSTRUCTIONS.....	Page 6
D:	SPECIFICATIONS.....	Page 13
E:	COMPONENT DESCRIPTIONS & FUNCTIONS.....	Page 14
F:	PRE-RIDE CHECKLIST.....	Page 21
G:	PROPER OPERATION.....	Page 24
H:	ROUTINE CHECKS & MAINTENANCE.....	Page 30
I:	TROUBLESHOOTING.....	Page 39
J:	WARRANTY.....	Appendix

C: SAFETY INSTRUCTIONS

RIDING SCOOTERS IS FUN ONLY IF YOU PUT SAFETY AS YOUR TOP PRIORITY.

! WARNING: Before you start operating your scooter:

- Be sure you read this owner manual completely and understand all operating features.
- Take sufficient time training with safe and proper riding technique.
- Practice until you are knowledgeable and comfortable with your scooter.
- Knowledgeable with all road signs.

! WARNING Failure to follow any SAFETY INSTRUCTION could cause severe injury or even death to the scooter operator, passenger or a bystander.

Protective Gear

Riding a scooter leaves the rider exposed. Therefore, wearing appropriate protective gear can prevent or diminish injuries from accidents.

1. An Approved Helmet

The majority of serious motorcycle injuries and deaths are the direct result of a head injury. Therefore, drivers and passengers should always wear an approved helmet to prevent or reduce the chance of head injury.

An approved helmet needs to:

- Meet U.S. Department of Transportation (DOT) and state standards. In addition with labels from the Safety Helmet Council of America, the American National Standard Institute (ANSI), or the Snell Memorial Foundation to assure the integrity of the product.
- Fits snugly on your head.
- Have no obvious defects such as cracks, loose padding or frayed straps.

2. **Eye and Face Protection**

- A plastic face shield can help prevent accidents by guarding the face from debris, allowing the rider to devote full attention to the road.
- Goggles can protect your eyes in the same manner. Never use eyeglasses or sunglasses in place a face shield or goggles.

3. **Clothing**

- Bright clothing should be worn by the driver so as to be easily seen by other motorists.
- Jacket and pants should cover your arms and legs completely, but not too loose to flap in the wind or catch on the levers or wheels which could result in an accident.

- Leather or heavy denim clothing is preferred as these materials help to prevent or reduce abrasion.
- Boots or shoes should be high enough to cover your ankles and sturdy enough to provide support.
- Gloves give you a better grip and help protect your hands from the elements.

Safe Riding

- Keep enough distance from the other vehicles around you as this gives you time to react.
- Ensure that you have a driver's license with correct classification to ride this scooter in your state.
- Always observe the rules of the road. Observe the posted speed limit, and signal your turns well in advance.
- Know your limits. Do not go faster than you are able to control. Always travel at a speed that is proper for the terrain, operating conditions, and your experience.
- Always inspect your scooter each time you use it to make sure it is in safe operating condition.
- Always follow the inspection and schedule maintenance procedures described in this manual.

- Test your brakes after operation in wet conditions. If necessary, apply the brakes several times to let friction dry out the linings.
- Never attempt wheelies, jumps and other stunts, as these could cause damage to the scooter and loss of control.
- Always keep both hands on the handlebars and feet on the floor board during operation.
- Never consume alcohol or drugs before or while riding scooter.
- Limit the travel distance to avoid fatigue that can affect your performance.

Being seen

Many scooter accidents are caused by car drivers who do not see scooter riders on the road. Therefore you need to ensure to follow these guidelines:

- Wear bright clothing to increase visibility. Bright orange, yellow or green jackets or vests and brightly colored helmet can help others see you.
- Always use turn signals when you are planning to turn or merge to main road and turn it off after you have made your turn.
- Flash brake lights whenever you are going to slow down more quickly or where others may not expect you are going to slow down.
- Stay out of blind spot of other motorists.
- When you come to an intersection, move to the portion of your lane that will bring you into another driver's field of sight at the earliest possible moment.

Carrying Passengers & Loading

! WARNING:

- **This scooter is rated for 2 passengers; total weight of the rider and the passenger must not exceed 330 lbs.**
- **Do not exceed 25 lbs of cargo.**
- **Any cargo should be kept in front compartment or under seat storage area.**

You should avoid carrying passengers or large loads until you have gained sufficient experience riding alone. Extra weight changes handling, stability, braking performance, turns, acceleration and deceleration. *To carry passengers safely you must:*

1. Instruct the passenger before you start.
 - Must wear a helmet.
 - Get on the motorcycle after you have started the engine.
 - Sit as far forward as possible without crowding the driver.
 - Hold firmly to your waist, hips, or belt or passenger handle.
 - Keep both feet on the pegs at all time, even when the motorcycle is stopped.
 - Keep legs away from the muffler.
 - Stay directly behind you, leaning as you lean.
 - Avoid any unnecessary talking or motion.

2. Adjust your riding technique with passenger

- Go slower
- Start slowing earlier as you approach a stop.
- Maintain a larger cushion of space ahead and to the sides.
- Wait for larger gaps when you want to cross, enter, or merge with traffic.

3. Keep the load low and distribute the load evenly. An uneven load can cause the motorcycle to drift to one side.

Gasoline & Exhaust Fumes

!WARNING Gasoline is highly flammable and exhaust fumes are poisonous:

- Turn off engine before refueling.
- not to spill any gasoline on the engine, exhaust system or the plastic body.
- Do not refuel while smoking or near any open flame.
- Do not operate your scooter in a closed area as the exhaust fumes may cause loss of consciousness or death within a short time.
- Do not park the scooter near any flammable source.
- If you swallow gasoline, inhale gasoline vapor or spill gasoline into your eyes, see doctor immediately or call American Association of Poison Control Centers at 1-800-222-1222 for assistance.

- If you spill gasoline on your clothes, change and wash the affected area immediately with soap.

Modification

Any modifications to this scooter or removal of original equipment without approval from TN'G Scooters may cause it to be unsafe for use and may trigger severe accident.

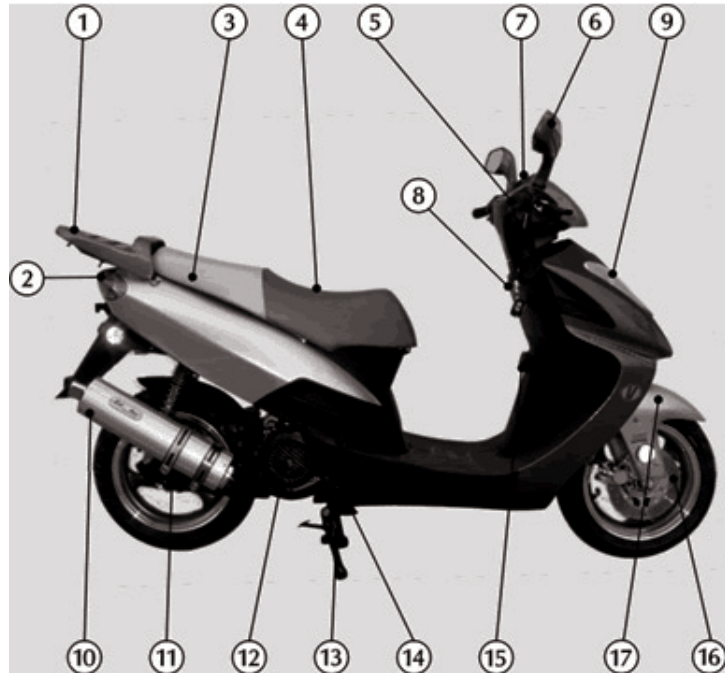
Modifications may also make your scooter illegal to use and will void any and all warranty coverage.

D: SPECIFICATIONS

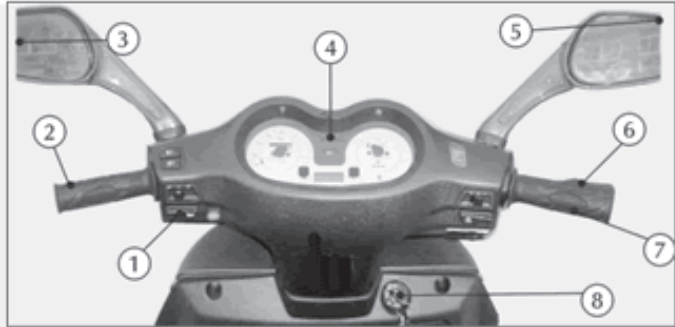
Model	Del Rey 150	Exhaust Valve Gap (Cold)	0.8 mm
Model Number	DR150T-6	Spark Plug Type	NGKCR7HSA
Length	76.7 inches	Battery	12V 8Ah
Width	25.5 inches	Headlight	12V / 18W
Height	44.5 inches	Brake / Tail Light	12V21/5W
Dry Weight (No fuel)	253 lbs	Turn Signal Lights	12V/10W
Max. Load	330 lbs	Fuses	15 Amps
Noise	80dB(A)	Fuel Type	90 Octane
Engine Type	Air Cooled - 4 Stroke	Fuel Capacity	6 L / 1.6 gals
Cylinder Arrangement	Single Cylinder	Lubricating Oil	SAE 10 W30
Displacement	150cc		
Ignition	CDI		
Transmission	CVT		
Front Brake	Disc Anti-Lock		
Rear Brake	Drum		
Tire Size (Front)	130/60 x 13		
Tire Size (Rear)	130/60 x 13		
Tire Pressure (Front)	32psi		
Tire Pressure (Rear)	32psi		

E: COMPONENT DESCRIPTIONS & FUNCTIONS

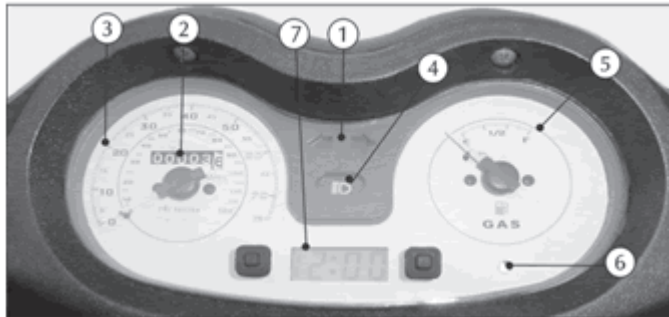
- 1) Rear Carrier
- 2) Rear Light
- 3) Fuel Tank (under seat)
- 4) Seat
- 5) Throttle
- 6) Rear View Mirror
- 7) Brake Oil Reservoir
- 8) Front Box
- 9) Headlight
- 10) Exhaust Pipe
- 11) Drum Brake
- 12) Magneto
- 13) Passenger Footrest
- 14) Side Stand
- 15) Bag Hook
- 16) Disc Brake
- 17) Front Fender



Controls and Instrument Panel

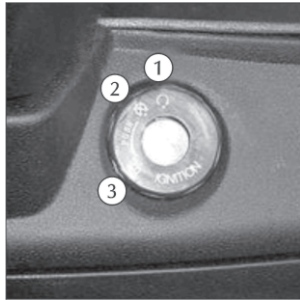


- 1) Horn Switch
- 2) Rear Hand Brake
- 3) Rear View Left Mirror
- 4) Instrument Panel
- 5) Rear View Right Mirror
- 6) Front Hand Brake
- 7) Throttle
- 8) Electrical Starter Switch



- 1) Turning Indicator
- 2) Odometer
- 3) Speedometer
- 4) High Beam Indicator
- 5) Fuel Level Indicator
- 6) Alarm Indicator
- 7) Digital Clock

Ignition Switch / Steering & Seat Lock

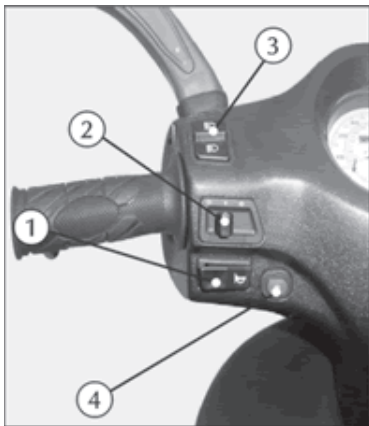


1. ON (starting): Engine can be started, electrical switches for horn, lights, etc. can be activated, Keys can't be removed
2. OFF (shutting down): Engine is deactivated, Lights, horn, etc. are inoperable. Engine can't be started. Keys can be removed
3. LOCK: Lights, horn, etc. can't be used, Keys can be removed

CAUTION: If Ignition circuit (key or Remote) is ON when engine is not running will drain battery and shorten battery life.

NOTE: Always turn "OFF" Remote Ignition and key Ignition when engine is not running.

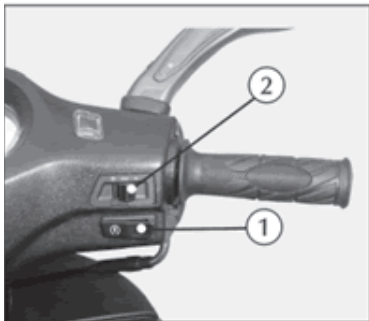
! WARNING Do not change the key position while the scooter is in motion. It may result in loss of control or an accident.



Left Handle

1. Horn Switch Press - the switch to sound the horn
2. Turn Signal Switch - Slide switch left to turn left, slide switch right to turn right and push in the switch to discontinue.
3. Headlight Switch - High beam up position, low beam down position.
4. Engine Kill Switch Turn into the “X” position to shut off. Turn into the “O” position to start the engine.

CAUTION: Be sure to always use **LO BEAM** light when facing oncoming traffic.



Right Handle

1. Electrical Starter Switch Press electrical starter switch for a maximum of 5 seconds. If engine does not start, try again after a gap of 30 seconds
2. Lights Slide switch to left up to first level and quarter's position lights will come on, slide once more to next level the head lights will come on.

Speedometer (See page 15) - Indicates the operating speed.

Odometer (See page 15)- Indicates accumulated distance.

Gas Gauge (see page 15) - Indicates the fuel Level. The needle moves towards “E” – (empty) as the gas level is decreasing.

Throttle Control (see page 15)

- Control speed by rotating the throttle. (Right Grip)
- To accelerate speed, rotate the throttle towards you.
- To decelerate speed, rotate the throttle away from you.

Engine Stop Switch (see page 17) – Set the switch to on before starting the engine. Set the switch to off for EMERGENCY STOP. For example, if the scooter overturns or you cannot decrease speed with the throttle.

Rear Brake Lever/ Front Brake Lever (see page 15) - To apply rear brake, pull the left lever towards the gradually. To apply the front brake, pull the right lever towards throttle grip.

CAUTION:

- Do not store anything susceptible to heat inside storage compartments.
- Do not let humidity spread from storage compartment.
- Do not put anything valuable or breakable in storage compartment.
- The compartment is not waterproof. Use plastic bags to store stuff when washing the scooter.

Luggage

!WARNING:

- Front Compartment - Do not exceed maximum 3 lbs for cargo.
- Under Seat - Do not exceed maximum 22 lbs for cargo.

Fuel Tank Cap (see page 14 for location)

- To remove the gas tank cap, lift the rear seat to expose the fuel cap. Turn the gas cap $\frac{1}{4}$ counter-clockwise to remove.
- Fill the tank up to the bottom of the filler tube. Do not fill past that point.
- When finished filling gas tank, replace the gas cap $\frac{1}{4}$ clockwise to its locked position. Swing seat down and make sure latch has engaged to lock the seat in place.

! WARNING:

- Always turn the engine off prior to refueling the scooter.
- Ensure the fuel tank cap is properly installed before riding.
- Do not overfill the tank as it may overflow when the fuel warms up and expands.
- Avoid spilling fuel on a hot engine.

CAUTION:

- Wipe off the spilled fuel immediately as fuel may deteriorate the paint on the scooter or any plastic parts.
- Always use 90 octane gasoline or higher when refueling the scooter.

F: PRE-RIDE CHECKLIST

1. CHECK THE FUEL LEVEL.

- Check the fuel gauge.
- If fuel is needed refer to directions on page 19 of this manual

NOTE: Always turn the engine off prior to refueling the scooter. Always use 90 octane gasoline or higher to refuel the scooter.

2. CHECK THE BRAKE LIGHT.

- Turn the ignition key to the “ON” position.
- Grip the front brake lever or rear brake lever while watching the rear brake light to make sure that it illuminates.

3. CHECK THE TURN SIGNALS.

- Turn the ignition key to the “ON” position.
- Move the turn signal control to the left and right positions. Check the front and rear turn signal lamps flash, as well as the turn signal indicators on the instrument panel.

4. CHECK THE TIRES.

Measure the pressure in each tire. The correct pressures are:

Front	32 PSI
Rear	32 PSI

- Visually inspect the tires for damage and wear. Look for nails, glass or stones what are cutting into the tire casing.
- Look for partial or abnormal tread wear. The middle of the tread should have:

Front Tire	1.5 mm minimum tread depth
Rear Tire	2 mm minimum tread depth

CAUTION: This Scooter uses tubeless tires on the front and rear wheels. These tires must always be replaced with tires of the same type.

5. CHECK THE BRAKES.

Front Brake- Compress the front brake lever and measure the distance traveled before the brake begins to slow the front wheel. The lever should travel between 10 to 20 mm before the wheel begins to drag.

Rear Brake - Compress the rear brake lever and measure the distance travelled before the brake begins to slow the rear wheel. The lever should travel between 10 to 20 mm before the wheel begins to drag.

Rear Brake Adjustment

- (See Page 31 in Section H).

Check the Brake Fluid Level.

- (See Page 31 in Section H)

6. CHECK THE SPARK PLUG

- The spark plug will need to be checked if you find the scooter hard to start. The gap should be between 0.023 & 0.032 inches. The electrode should be a light brown color.
- Incorrect gap can cause many problems for the scooter engine. Make sure it is correct!
- If the spark plug is fouled or damaged, replace it with another of similar type.

Replacing the spark Plug.

CAUTION: Allow the engine to cool down before attempting to replace the spark plug

- (For replacement instructions see pages 32 in the Section H.)

7. CHECK THE ENGINE OIL

- (See Page 33 in Section H)

8. CHECK THE TRANSMISSION OIL

- (See Pages 34 in Section H)

G: PROPER OPERATIONS & TECHNIQUES

! WARNING:

- Be sure you have read this owner manual completely and understand all operating features.
- Do not start the engine or operate the scooter in closed areas , as the exhaust fumes are poisonous and inhaling them can cause loss of consciousness and /or even death shortly.
- This scooter is rated for two persons, total weight with rider and passenger must not exceed 330 lbs.

1. ENGINE STARTING PROCEDURE

NOTE: If side kick stand is down, vehicle will not start.

- Normal Start - Place scooter on the center stand
- Turn the ignition key to the “ON” position.
- While holding brake lever, firmly push the electric start.

If the engine doesn't start after 3 to 4 seconds, then advance throttle by 1/8 to 1/4 turns.
DO NOT OVER ADVANCE.

NOTE:

It is recommended to always “prime” the fuel system by kick-starter when starting the scooter in the following situation (DO NOT ADVANCE THE THROTTLE WHILE KICK STARTING):

- Cold or wet weather
- If the fuel has run dry
- If the scooters has been stored for any length of time
- If electric start does not work

If bike does not start, please refer to trouble shooting section.

! WARNING:

Do not change the position of the ignition switch while the vehicle is in motion, only when the vehicle has come to a complete stop.

CAUTION:

- When scooter is not running, do not leave the ignition switch in the “ON” position for extended periods of time. The battery may become depleted to the point that the vehicle cannot be started.
- To preserve the scooter, each starting attempt should be less than 5 seconds.

- To maximize the engine life, warm up the engine for 2 to 3 minutes prior to riding. No fast acceleration when the engine is still cold.

NOTE:

The engine will not start unless either the front or rear brake is activated.

2. RETRACTING THE STAND

Center Stand – Holding the left handle with your left hand and grasping the rear rack with your right hand, push the scooter forward and move the stand back with your foot until the stand retracts under the scooter.

Side Stand – Grasp the handlebars with both hands and tip the scooter upright. Move the stand back with your foot until the stand retracts under the scooter.

! WARNING:

- Do not apply the brakes too quickly or while in a turn as this may result in loss of traction and control.
- Wet conditions will affect braking. Give twice the normal braking distance in wet or slippery conditions. Take extra care while riding in these conditions.

3. RIDING POSITION

- Place your hands on the handlebars and step onto the scooter from the left side.
- Sit down on the seat while keeping your left foot on the ground for balance.
- Place your right hand on the front brake lever or left hand on rear brake lever.

4. ACCELERATION & DECELERATION

Speed can be adjusted by twisting the throttle control. Twist the throttle slowly towards you to increase speed and twist the throttle away from you quickly to decrease speed.

5. PULLING AWAY FROM THE CURB

- Sit with a leg on each side of the scooter adjust the rear view mirrors.
- Put on your turn signal before pulling away from the curb.
- Look over both shoulders for oncoming traffic; be sure that it is safe to pull out into the traffic.
- Release the rear brake and accelerate the scooter slowly to take off.

CAUTION:

Fast acceleration when the engine is cold can damage transmission.

6. USING THE BRAKES

- The brakes work best when the front and rear brakes are applied simultaneously.

CAUTION: Test your brakes after washing your scooter or riding through a large pool of water. When this happens, apply the brakes gently until they dry themselves and work effectively again.

7. STOPPING & PARKING

- Release the throttle and steer the scooter to the side of the road. Gently apply the front brake with your right hand, and at the same time gently compress the rear brake lever with your left hand.
- Extend your left foot just before coming to a complete stop so as to keep the scooter upright when it stops.
- Turn off the ignition key and dismount the scooter on the left side.
- Use your right foot to extend the side stand of the scooter.

! WARNING:

Do not touch the engine and the exhaust system as they can become very hot.

CAUTION:

- If the scooter will be parked for an extended period of time, use the center stand instead.
- Do not park on a slop or soft ground as the scooter may overturn.
- Do not park near to any flammable material.

8. **BREAK IN PROCEDURES**

- It is very important to follow this procedures during the first 300km to achieve the best performance from the scooter.
- Limit full throttle operation and avoid any condition that may result in engine overheating.
- Always keep the speed below 40 mph.
- Do not overload the scooter or carry a passenger during this period.

CAUTION: Have your TN’G Scooter dealer check the vehicle, if any engine trouble occurs during this period.

H: ROUTINE CHECKS & MAINTENANCE

Item	Initial 300km	1000km	4000km or Every 6 Months
Fuel Line			I
Fuel Filter			R
Air Filter	I	I	I
Spark Pug			R
Valves	I	R	R
Engine Oil	R	I	R
Oil Filter		R	R
Carburetor		R	R
Cooling System	I	I	I
Drive Belt	REPLACE EVERY TWELVE MONTHS		
Transmission Oil	I		R
Braking System		I	I
Wheels		I	I
Wheel Bearings		I	I
Steering Bearings	I	I	I
Rear Schock Absorber		I	I
Chassis Fasteners	R	R	R
Control and Meter Cables	R	R	R
Throttle Grip Housing/Cable		R	R
Centerstand/Sidestand	I	I	I
Headlight and Other Lights		I	I
Additional Fasteners		I	I
R= Relace or Service/Adjusment Due I= Inspect and replace as necessary			

NOTE: * If regular driving is in arid or coastal condition, air filter and engine oil may need replaced more frequently.

RECOMMENDED: To insure warranty and quality performance have a TN'G dealer perform regular maintenance.

TIRE PRESSURE / TREAD

Measure the pressure of each tire. The correct pressures are: Front 32 PSI / Rear 32 PSI. Visually inspect the tires for damage and wear or abnormal tread wear. Look for nails, glass, stones or any sharp object cutting into the tire casing. The middle of the tread depth should have: Front 1.5mm / Rear 2mm

CAUTION: This scooter uses tubeless tires on the front and rear wheels, always replaced with tires of the same type.

REAR BRAKE ADJUSTMENT

Total free play for brake lever should not exceed 30 mm. To firm up brake, turn nut located on the left side of the back wheel clockwise until you reach the acceptable level. Turn it counterclockwise to soften brake.

HYDRAULIC BRAKE FLUID LEVEL - Front Brake

1. Check the fluid level by looking at the reservoir. The fluid level must be between the two lines. If it is below the lower line, check the brake line and cylinder for a possible leak.

2. Check the brakes for excessive wear. The middle groove of the brake should still be visible. If it isn't, the pads should be replaced.
3. To replace the brake fluid, open the reservoir and add fluid as required.

CAUTION:

- Be sure not to introduce any water or air into the brake system when changing the fluid.
- Do not spill any brake fluid on any other motorcycle parts as the fluid can damage metal and paint.
- Always replace the brake fluid with type DOT 3 brake fluid.

RECOMMENDATION: An authorized TN'G Dealer or Service Center should complete all brake fluid adjustments.

SPARK PLUG REPLACEMENT

Check spark plug if scooter is hard to start.

1. The gap should be between 0.023 & 0.032 inches.
2. The electrode should be a light brown color.

3. Replacing the spark plug,
 - Remove the plug cover and remove the spark plug using the spark plug wrench in the tool kit.
 - After setting the gap of the new plug, insert it into the cylinder & tighten firmly by hand, then by using provided wrench tighten another $\frac{1}{2}$ to $\frac{3}{4}$ turns.
 - Reattach the spark plug cover.

! WARNING: Do not change spark plug while engine is hot.

CAUTION:

- Incorrect gap can cause problems to the scooter engine. Make sure it is correct!
- If the spark plug is fouled or damaged, replace it with (NGKCR7HSA) or like plug.

RECOMMENDATION:

Most spark plugs are self-cleaning. After replacing its best to ride the scooter for a minimum of 10 min.

CHECKING ENGINE OIL LEVEL

When the scooter is new, the oil will need to be changed after the first 300 Km. (please review regular maintenance schedule on page 30) The oil level should be checked every 500 km and oil added as needed.

1. Stop the scooter on a level surface and turn the engine off.

2. Put the scooter on its center stand and let the engine sit for a few minutes.
3. Remove the oil dipstick, wipe it with a clean towel and replace it. Just rest the dipstick on the threads, do not screw it down into place when measuring the oil level.
4. Remove the dipstick again and observe the oil level. It should be between hi and low-level marks on the dipstick.
5. If the oil level is near the low mark, please add enough SAE 10W30 lubricating oil to bring the level up near hi mark.

CAUTION: If the scooter is being used under more severe conditions such as gravel roads or lots of stop & go traffic, then the oil should be changed more frequently than every 4000 km.

CHECK THE TRANSMISSION OIL

Inspect the transmission oil after the first 300 km and then after every 4000 km or six months whichever ever comes first.

NOTE: Recommend use SAE 10W40 oil in the transmission.

1. Place the scooter on its center stand on a level surface. Let the engine warm up for three minutes and then shut the engine off.
2. Remove the oil fill plug and the oil drain plug and allow the oil to drain completely.
3. Inspect the sealing washer on the drain plug, and if it's OK reinstall the drain plug.

4. Refill the gearbox until full.
5. Reinstall the oil fill plug.

! WARNING: Use caution when changing oil to avoid burns!

CAUTION:

- If the scooter is used in excessively wet areas, or used in severe conditions replace the transmission oil more often than recommended.
- Make sure that the fill and drain plugs are tight and not leaking.
- Make sure that no foreign substances fall into the transmission box.

AIR FILTER MAINTENANCE

The air filter should be inspected and cleaned at every 1000km interval.

1. Lift seat up, air box is located in front of seat compartment.
2. Remove the screws that hold the cover of the air cleaner in place and lift off the air cleaner cover.
3. Lift out the air filter screen and cartridge.
4. Clean the screen and cartridge with compressed air.
5. Replace the cartridge if necessary.
6. Reassemble the air filter components and back end of the scooter.

CAUTION:

- If riding in an excessively dusty location, the air filter should be inspected more often than the recommended.
- When remounting the air cleaner cover components onto the scooter. Be careful to fit all pieces into their correct place. Failure to achieve proper fit will cause leaks in the air intake system that can cause engine damage.
- Handle the air filter cartridge carefully so that it does not become deformed.
- Never allow water to enter the air filter assembly.

NOTE: Clean and/or replace the air filter components if you experience a decrease of engine power.

BATTERY MAINTENANCE

Your Scooter uses a calcium sealed, maintenance free, VRLA battery and you should not remove the sealing strip once the battery has been installed and prepped by a TN'G dealer.

NOTE: To protect your battery against failure it is important to keep your battery fully charged. This applies primarily if you are not riding your scooter on a regular basis or are traveling only short distances while you ride. In these limited use situations you should charge your battery at least once a month using the included battery charger for a minimum

of 10 hours. Additionally, it is important that your scooter be stored in a dry area and protected from extreme temperatures.

BATTERY REPLACEMENT

The scooter battery is self-sustained by electric current generated by the alternator within the scooter. It's a good idea to replace the battery every three years.

1. Always turn the ignition system off prior to replacing the battery.
2. Observe correct polarity when replacing the battery. The **RED** wire is connected to the positive battery terminal and the **BLACK** wire is connected to the negative battery terminal.
3. Make sure that the battery posts are kept clean at all times and have good contact area. Use a wire brush to remove any signs of corrosion if required.
4. Avoid sparks or flame when handling the battery.

FUSE REPLACEMENT

Main Fuse

1. The main fuse is located next to the battery in the floorboard; it is rated at 15 Amps.
2. A visual inspection of the fuse will tell if the fuse is “open” (burned out).
3. If the fuse is open, then it needs replacement.

NOTE: Check fuse for good tight contact within fuse housing.

! WARNING: Always turn the ignition off before inspecting the fuses.

CAUTION:

- When removing the fuse from the fuse box do not squeeze the fuse puller or it will release the fuse.
- When inserting the new fuse be sure that it fits snugly into the fuse socket. A loose fit will cause intermittent electrical problems and possible overheating of the fuse contacts.
- Always replace the open fuse with another of the same type!
- When washing your scooter, be sure not to get water into the fuse box as this could cause electrical problem.
- Do not use a fuse of higher amperage than recommended; this will cause extensive damage to the electrical system and possibly a fire.

NOTE: If the new fuse burns out immediately, have a TN'G dealer check scooters complete electrical system.

I: TROUBLESHOOTING

ENGINE IS DIFFICULT TO START

1. Check for Fuel in Carburetor
 - i. If No Fuel
 - a. Out of gas – Fill fuel tank
 - b. Fuel cap air hole blocked – Unblock air hole
 - c. Fuel filter or petcock blocked – Clean or replace fuel switch
 - ii. With Fuel – Check Spark Plug
2. Check Compression
 - i. No Compression – Have TN’G dealer inspect the scooter
 - ii. With Compression – Check Spark Plug
3. Spark Plug
 - i. No Spark
 - a. Spark plug wet or fouled – Remove plug & prime kick the start pedal without fuel & ignition. Re-install spark plug
 - b. Intermittent spark plug lead – Replace lead
 - c. Spark plug dirty or wrong gap – Replace plug or correct gap

- d. Loose spark plug – Tighten spark plug
 - ii. Spark Plug OK – Check Carburetor
4. Carburetor
- i. Carburetor Defective
 - a. Blocked idle jet – Clean jet
 - b. Dirty float bowl – Clean bowl
 - c. Low fuel in bowl – Adjust bowl
 - ii. Carburetor OK
 - a. Engine overheated – Check & replace lubricating oil
 - b. Air inlet system blocked or leaky – Remove blockage or leak

KNOCKING SOUND IN CYLINDER

Causes

1. Engine Overheating
2. Spark Plug Defective
3. Ignition Timing Too Early
4. Carbon Build-Up

- i. In Cylinder
- ii. In Exhaust Pipe & Muffler

Solutions

- Check & replace lubricating oil
- Replace the spark plug
- Adjust ignition timing
- Remove carbon build-up
- Remove carbon build-up

LOW POWER OUTPUT FROM ENGINE

Causes

1. Air Cleaner Blocked
2. Fuel Line In Carburetor Blocked
3. Excessive Carbon Deposit On Piston In Cylinder & Exhaust System
4. Piston & Cylinder Excessively Worn
5. Ignition Timing Incorrect
6. Clutch Slipped
7. Belt Is Lose

Solutions

- Clean Air Filter
- Remove Residue
- Remove Carbon Build-Up
- Replace Piston & Cylinder
- Adjust Timing
- Adjust Clutch
- Replace Belt

BLACK OIL & EXHAUST FROM EXHAUST PIPE

Causes

1. Carburetor Not Atomizing Fuel Properly
2. Air Cleaner Blocked

Solutions

- Check & Adjust Carburetor
- Clean Air Filter

POOR FUEL ECONOMY

Causes

1. Fuel System Leaks
2. Air Cleaner Blocked
3. Idle Speed Too High
4. Riding At Excessive Speeds

Solutions

- Repair Leak
- Clean Air Filter
- Adjust Idle Speed
- Ride At More Economical Speeds

FUEL DRAINING FROM CARBURETOR OVERFLOW TUBE

Causes

1. Float Bowl Residue
2. Float Bowl Needle Valve Not Completely Closed
3. Occasional Fuel Overflow

Solutions

- Clean The Float Bowl
- Replace Needle Valve
- Tap The Fuel Bowl Lightly

PETCOCK / FUEL FILTER LEAKS

Causes

1. Fuel Switch Loose
2. Broken Seal

Solutions

- Tighten The Fuel Switch
- Replace Fuel Switch

WARRANTY

CMSI, Inc., warrants to the first retail purchaser of all TN'G vehicles from an Authorized CMSI Dealer and each subsequent owner that the vehicle is free from defects in materials and workmanship for the period stated in this warranty section.

To Qualify For This Warranty

- The CMSI vehicles must be purchased from a dealer within the United States, Canada or Mexico who is authorized by CMSI to sell CMSI products.
- Dealer must be signed up and be familiar with CMSI warranty policy.

Warranty Verification Method

Owner and dealer sign Owner Registration Card at time of purchase. This information is kept in CMSI's warranty system and can be requested thru an authorized dealer.

WARRANTY RESPONSIBILITY

The Manufacturer

CMSI Inc.

To repair or replace , at its option, any part which is proven to be defective in material or factory workmanship under normal use for the applicable warranty period.

- The repair or replacement of defective parts under this limited warranty must be made by an Authorized CMSI Dealer or service center. Warranty repairs will be made at no charge to you for parts or labor.
- Parts repaired or replaced under warranty are warranted only during the balance of the applicable warranty period.

The Authorized Dealer

To give you complete warranty documentation when you pick up your vehicle. To perform warranty repairs on any CMSI product that qualifies for such repairs.

The selling dealer shall sign the Acceptance Certificate and a Card of Delivery upon delivery of the vehicle. The Card of Delivery outlines the steps your dealer has taken to fulfill his responsibility to properly assemble and service your new vehicle and inform you of proper break-in, warranty, periodic maintenance and maximum load and other riding and safety rules.

You, the Owner

- The customer should retain all service records for future reference.
- Service inspections and replacements in accordance with the time and mileage intervals given in the Maintenance Schedule are essential.
- You are responsible for paying all maintenance costs, including service interval costs.
- Failures which occur due to improper maintenance as determined by T N'G are not covered under this warranty.
- The customer may choose the extended warranty option for engines on 50cc and above models by purchasing the Interlube Opti-4 engine lubricant at the time of purchase of the new unit and use only that lubricant during the entire warranty period.

An authorized CMSI dealer is your best source for scheduled maintenance on your vehicle.

Regardless of who performs your maintenance, if warranty repairs are needed, your dealer may ask you for documentation which may consist of one or more of the following:

- A Maintenance Record showing the odometer mileage and service date. Each entry should be signed or stamped by a person who is qualified to service your motorcycle or yourself if you have performed the maintenance.

- Copies of repair orders or other receipts for required maintenance that include the odometer mileage and service date.

NOTE: All maintenance receipts should be kept by the owner.

Warranty Coverage Table

	2005 Model Year				2006 Model Year			
	Scooters and Street Motorcycles				Scooters and Street Motorcycles			
			With Opti-Lube				With Opti-Lube	
	Parts	Labor	Parts	Labor	Parts	Labor	Parts	Labor
Engine								
50cc and below	12 mos.	3 mos.	n/a	n/a	12 mos.	6 mos.	24 mos.	12 mos.
51cc and above	12 mos.	6 mos.	24 mos.	12 mos.	12 mos.	12 mos.	24 mos.	24 mos.
Emission components								
less than 50cc	12 mos.	3 mos.	12 mos.	3 mos.	12 mos.	6 mos.	12 mos.	6 mos.
less than 170cc	<i>lesser of 5 yrs. or 12,000 kms</i>				<i>lesser of 5 yrs. or 12,000 kms</i>			
170cc to 280cc	<i>lesser of 5 yrs. or 18,000 kms</i>				<i>lesser of 5 yrs. or 18,000 kms</i>			
280cc and above	<i>lesser of 5 yrs. or 30,000 kms</i>				<i>lesser of 5 yrs. or 30,000 kms</i>			
Basic (non-engine)								
50cc and below	12 mos.	3 mos.	12 mos.	3 mos.	12 mos.	6 mos.	12 mos.	6 mos.
51cc and above	12 mos.	6 mos.	12 mos.	6 mos.	12 mos.	12 mos.	12 mos.	12 mos.
Body parts								
all models	12 mos.	1 mos.	12 mos.	1 mos.	12 mos.	1 mos.	12 mos.	1 mos.
Batteries	6 months from battery manufacturer				6 months from battery manufacturer			

Coverage Begins

The date the motorcycle is delivered to the first retail purchaser

Warranty

CMSI shall repair or replace, at its option, any part (including parts of the emission control system) that is found defective in material or workmanship under normal use for the applicable time period.

Parts or Labor

No charge to you.

WARRANTY DISCLAIMERS, LIMITATIONS & EXCLUSIONS

Disclaimer of Consequential Damage & Limitation of Implied Warranties

CMSI Inc. disclaims any responsibility for:

- Loss of time
- Loss of use of vehicle
- Transportation expenses (rental and /or towing)
- Any other incidental or consequential damage
- Any other incidental or consequential expenses (storage)

Duration of Implied Warranties

Any Implied Warranties, including the implied warranty of merchantability and fitness for a particular purpose are limited to the duration of this written warranty.

State Laws May Vary

The previously listed limitations or exclusions may not apply to a motor scooter because of state laws. Some states may not allow limitations on how long an implied warranty lasts. Some states may not allow exclusion or limitation of incidental or consequential damages.

Your Legal Rights

These warranties give you specific legal rights. You may also have other rights which vary from state to state. It is the responsibility of the owner to be aware of state laws which pertain to this issue in your particular state.

These Warranties Do Not Cover

Failures which are not due to a defect in material or factory workmanship.

Parts or accessories affected or damaged by:

- Lack of required maintenance
- Owner abuse or misuse
- Accident and/or collision

- Normal wear
- Neglect
- Improper installation
- Unsuitable use in an application for which the part was not designed
- The incorporation or use of unsuitable attachments or parts
- The unauthorized alteration of any part
- The incorporation or use of unsuitable attachments or parts
- Deterioration from the elements
- Failure to follow “break-in” procedures
- Replacement of expendable maintenance item including, but not limited to:
 - Spark plug -gaskets -coolant -belts -Filters
 - hoses -lubricants -fuses -Tires (see Owner’s Manual)
- Paint and/or decals fading, peeling, blistering, chipping or rusting.
- Plastic body parts and panels, See “Warranty Time Table”

Use for the following activities, shall VOID coverage:

- Racing
- Competition

- Rental or other commercial uses
- Towing another vehicle, trailer or similiar device
- Alteration to the engine or drive train
- Any operation or use outside of that described in this Owner’s Manual
- Alteration of the odometer so that the actual mileage cannot be determined; alteration may VOID coverage

Replacement parts refer to Distributors Limited Warranties – Replacement Parts

DISTRIBUTORS LIMITED WARRANTY – NEW MOTORCYCLE

CMSI warrants to the first retail purchaser and subsequent purchasers of this vehicle that the motorcycle is free from defects in materials and workmanship for the period stated in “Warranty Time Table”.

To Qualify For This Warranty

- The vehicle must originally have been purchased from a dealer within the United States, Canada, or Mexico who is authorized by CMSI to sell CMSI products.

- Prior to delivery to the purchaser, setup and pre-delivery service must be performed by a dealer or service center who is authorized by CMSI to deliver it vehicles.

DISTRIBUTOR'S LIMITED WARRANTY- MOTORCYCLE TIRES

Warranty Time Period

90 days, or until the center tread is worn to a depth of 3/32" , whichever occurs first.

Coverage begins

- Original tire on motorcycle - date of delivery
- Tire purchased as replacement - date of purchase

Warranty Coverage

Tires distributed and sold by CMSI which are either

- Original equipment on CMSI vehicles, or
- Specified by CMSI for the model the tire is installed on and purchased from an Authorized Dealer for replacement use.

To qualify for this warranty

- The tire must have been purchased from an Authorized CMSI Dealer.

- The tire was part of the original factory equipment.
- The tire must have been used for its designed purpose.

The Obligation of CMSI Inc

To replace any tire which is proven to be defective in material or factory workmanship under normal use – until the tire center tread is worn to a depth of 3/32". At that point, there will be no further warranty consideration, regardless of the tire's age or mileage.

Your Obligation

To practice proper tire care and prudent motorcycle operation. You must maintain tire inflation pressure and load in accordance with information in the manual, the tire information label on the motorcycle, and restrictions molded into the tire sidewalls. The replacement of a defective tire under this warranty must be made by an Authorized CMSI Inc Dealer.

Replacement Charges – up to 50% tread wear

Tire :No charge for a new direct replacement tire.

Labor : No charge for mounting and balancing – to the tire's original purchaser if the tire was factory or dealer installed.

You pay for mounting and balancing - if the tire was sold un-installed.

Replacement Charges – after 50% tread wear

Tire : 50% charge for a new direct replacement tire.

Labor : 50% charge for mounting and balancing.

This Warranty Does Not Cover

- Tires installed on non-CMSI vehicles
- Tires worn beyond the service limit specified in the appropriate Owners Manual.
- Tires rendered unserviceable by road hazard damage, such as impact breaks, punctures, cuts, or snags.
- Tires rendered unserviceable by running while flat, spinning, improper inflation, overloading, misalignment, improper mounting during replacement of after repair, or installation on unsuitable rims.
- Tires rendered unserviceable due to abuse or misuse such as towing a trailer.
- Tube-type tires fitted without inner tubes.
- Tires which have been repaired.
- Tires whose sidewalls have been modified by the addition or removal of material.
- Tires with superficial weathering, checking, or cracking.
- Tires used in racing or other competition.

DISTRIBUTOR'S LIMITED WARRANTY – REPLACEMENT PARTS

Warranty Time Period: See “Warranty Coverage Table” on page 4 of Warranty Section.

Coverage begins: The date of purchase from an Authorized CMSI Dealer.

To qualify for this warranty, the genuine CMSI part

- Must have been purchased from an Authorized CMSI Dealer.
- Must have been used in an application for which it was designed.

Warranty Coverage

- CMSI Inc will repair or replace, at its option, any genuine CMSI part that is defective in material or workmanship under normal use.
- Proof of date of purchase is required.

Parts installed by an Authorized CMSI Dealer:

Parts & Labor : No charge.

Parts not installed by an Authorized CMSI Dealer:

Parts : No charge

Labor : You pay for removal/installation charges

This Replacement Parts Warranty Does Not Cover

The following exclusions apply specifically to replacement parts in addition to the exclusions listed:

- Tires (Refer to Distributor's Limited Warranty – Motorcycle Tires)
- The motorcycle in which the part is installed.
- The color match of painted components (CMSI makes no warranty , expressed or implied, regarding the color match of painted components).

REPORTING SAFETY DEFECTS

If you believe that your vehicle has a defect which could cause an accident or could cause injury or death, you should immediately inform the National Highway Traffic Safety Administration (NHTSA) in addition to notifying CMSI Inc.

If NHTSA receives similar complaints, it may open an investigation, and if it finds that a safety defect exists in a group of vehicles, it may order a recall and remedy campaign. For this reason it is very important for you to notify CMSI of any change of address or ownership. NHTSA cannot become involved in individual problems between you, your dealer or CMSI.

To contact NHTSA, you may either call the Auto Safety Hotline toll-free at 1-800-424-9393 (or 202-366-0123 in Washington DC area) or write to :NHTSA, US Department of Transportation, Washington DC 20590. You can also obtain other information about motor vehicle safety from the hotline.

EMISSION CONTROL SYSTEM WARRANTY US EPA

The following warranty applies to the emission control system and is in addition to the LIMITED WARRANTY and NOISE CONTROL SYSTEM WARRANTY.

CMSI Inc. warrants to the first owner and each subsequent owner that his vehicle is designed and built so as to conform at the time of sale with applicable regulations of the US Federal Environmental Protection Agency at the time of manufacture and that it is free from defects in materials and workmanship which cause the motorcycle not to meet US Environmental Protection Agency Standards within the following:

If an emission-related part on your motorcycle is defective, the part will be repaired or replaced by CMSI. This is your emission control system DEFECTS WARRANTY.

The warranty period shall begin on the date the motorcycle is delivered to the first retail purchaser or, if the motorcycle is placed in service as a demonstrator or company vehicle prior to sale at retail, on the date it is first placed in service.

The following items are not covered by the emission control system warranty:

1. Failures which arise as a result of misuse, alterations, accident or non-performance of maintenance as specified in the Owners' Manual.
2. The replacement of parts (such as spark plugs, fuel and oil filters, etc.) used in required maintenance.
3. Loss of time, inconvenience, loss of motorcycle use or other consequential damages.
4. Any motorcycle on which the odometer mileage has been changed so that the mileage cannot be determined.

RECOMMENDATIONS FOR REQUIRED MAINTENANCE

IT IS RECOMMENDED THAT ANY EMISSION SYSTEM MAINTENANCE BE PERFORMED BY AN AUTHORIZED CMSI DEALER USING GENUINE CMSI REPLACEMENT PARTS. THE MAINTENANCE, REPLACEMENT OR REPAIR OF THE EMISSION CONTROL SYSTEM MAY BE PERFORMED BY ANY OTHER QUALIFIED SERVICE OUTLET OR INDIVIDUAL. NON-GENUINE PARTS MAY BE USED ONLY IF SUCH PARTS ARE CERTIFIED TO COMPLY WITH US ENVIRONMENTSL PROTECTION AGENCY STANDARDS.

US Emission Control System (California)

YOUR WARRANTY RIGHTS AND OBLIGATIONS

The California Air Resources Board and CMSI, Inc. (hereafter “CMSI”) are pleased to explain the emission control system warranty on your 2005 and later motorcycle. In California new motor vehicles must be designed, built and equipped to meet the State’s stringent anti-smog standards. CMSI must warrant the emission control system on your motorcycle for the periods of time listed below provided there has been no abuse, neglect or improper maintenance of your motorcycle.

Your emission control system may include parts such as the carburetor or fuel injection system, catalytic converter and engine computer. Also included may be hoses, belts, connectors and other emission-related assemblies.

Where a warrantable condition exists, CMSI, Inc will repair your motorcycle at no cost to you, including diagnosis, parts and labor.

MANUFACTURER’S WARRANTY COVERAGE

See “Warranty Coverage Table” on page 4 of warranty section.

OWNER’S WARRANTY RESPONSIBILITIES

- As the motorcycle owner, you are responsible for the performance of the required maintenance listed in your owners’ manual. CMSI recommends that you retain all receipts covering maintenance on your motorcycle, but CMSI cannot deny warranty solely for the lack of receipts or for your failure to ensure the performance of all scheduled maintenance.
- You are responsible for presenting your motorcycle to a CMSI dealer as soon as a problem exists. The warranty repairs should be completed in a reasonable amount of time, not to exceed 30 days.
- As the motorcycle owner, you should be aware that CMSI may deny your warranty coverage if your motorcycle or a part has failed due to abuse, neglect, improper maintenance or unapproved modifications.

If you have any questions regarding your warranty rights and responsibilities, you should contact CMSI, Inc. P.O. Box 969, 8146 304th Ave SE, Preston, WA 98050, or the California Air Resources Board at P.O.Box 8001, 9528 Telstar Avenue, El Monte, CA 91734-8001.

CMSI, Inc., 8146 304th Ave SE, Preston, WA 98050, (hereinafter “CMSI”) warrants that each new CMSI motorcycle includes as standard equipment a headlight, taillight and stoplight, and is street legal:

- A. is designed, built and equipped so as to conform at the time of initial retail purchase with all applicable regulations of the United States Environmental Protection Agency, and the California Air Resources Board; and
 - B. is free from defects in material and workmanship which cause such motorcycle to fail to conform with applicable regulations of the United States Environmental Protection Agency or the California Air Resources Board for a period of use (See Warranty Coverage Table on page 4 of warranty section).
- I. COVERAGE.** Warranty defects shall be remedied during customary business hours at any authorized CMSI dealer located within the United States of America in compliance with the Clean Air Act and applicable regulations of the United States Environmental Protection Agency and the California Air Resources Board. Any part or parts replaced under this warranty shall become the property of CMSI.

In the State of California only, emission related warranted parts are specifically defined by the state's Emission Warranty Parts List. These warranted parts are: carburetor and internal parts; intake manifold; fuel tank; fuel injection system; spark advance mechanism; crankcase breather; air cutoff valves; fuel tank cap for evaporative emission controlled vehicles; oil filter cap; pressure control valve; fuel/vapor separator; canister; igniters; breaker governors; ignition coils; ignition wires; ignition points; condensers; and spark plugs if failure occurs prior to the first scheduled replacement ; and hoses, clamps, fittings and tubing used directly in these parts. Since emission related parts may vary from model to model, certain models may not contain all of these parts and certain models may contain functionally equivalent parts.

In the State of California only, Emission Control System emergency repairs, as provided for in the California Administrative Code, may be performed by other than an authorized CMSI dealer. An emergency situation occurs when an authorized CMSI dealer is not reasonably available, a part is not available within 30 days, or a repair is not completed within 30 days. Any replacement part can used in an emergency repair. CMSI will reimburse the owner for the expenses, including diagnosis, not to exceed CMSI suggested retail price for all warranted parts replaced and labor charges based on CMSI recommended time allowance for the warranty repair and the geographically appropriate hourly labor rate. The owner may be required to keep receipts and failed parts in order to receive compensation.

II. LIMITATIONS. This Emission Control System warranty shall not cover any of the following:

A. Repair or replacement required as a result of

- (1) accident,
- (2) misuse,
- (3) repairs improperly performed or replacements improperly installed,
- (4) use of replacement parts or accessories not conforming to CMSI, Inc. specifications which adversely affect performance and/or
- (5) use in competitive racing or related events.

B. Inspections, replacement of parts and other services and adjustments required for required maintenance.

C. Any motorcycle on which the odometer mileage has been changed so that actual mileage cannot be readily determined.

III. LIMITED LAIBILITY

- A.** The liability of CMSI under this Emission Control System Warranty is limited solely to the remedying of defects in material or workmanship by an authorized CMSI motorcycle dealer at its place of business during customary business hours. This warranty does not cover inconvenience or loss of use of the motorcycle or transportation of the motorcycle to or from the CMSI dealer. CMSI SHALL NOT LIABLE FOR ANY OTHER EXPENSES, LOSS OR DAMAGE, EITHER DIRECT, INCIDENTAL, CONSEQUENTIAL OR EXEMPLARY ARISING IN CONNECTION WITH THE SALE OR USE OF OR INABILITY TO USE THE CMSI MOTORCYCLE FOR ANY PURPOSE. SOME STATES DO NOT ALLOW THE EXCLUSION OR LIMITATION OF ANY INCIDENTAL OR CONSEQUENTIAL DAMAGES, SO THE ABOVE LIMITATIONS MAY NOT APPLY TO YOU.
- B.** No express emission control system warranty is give by cmsi except as specifically set forth herein. Any emission control system warranty implied by law, including any warranty of merchantability or fitness for a particular purpose, is limited to the express emission control system warranty terms stated in this warranty. The forgoing statements of warranty are exclusive and in lieu of all other remedies. Some states do not allow limitations on how long an implied warranty lasts so the above limitations may not apply to you.

C. No dealer is authorized to modify this CMSI Limited Emission Control System Warranty.

IV. **LEGAL RIGHTS.** This warranty gives you specific legal rights, and you may also have other rights, which vary from state to state.

V. **THIS WARRANTY IS IN ADDITION TO THE CMSI LIMITED MOTORCYCLE WARRANTY.**

VI. **ADDITIONAL INFORMATION.** Any replacement part that is equivalent in performance and durability may be used in the performance of any maintenance or repairs. However, CMSI is not liable for these parts. The owner is responsible for the performance of all required maintenance. Any individual or service establishment may perform such maintenance. The warranty period begins on the date the motorcycle is delivered to ultimate purchaser.



8146 304th Ave SE
Preston, WA 98050

www.cmsiinc.com